

Bi-Phospho-FGFR(Y653/654) Antibody
Peptide Affinity Purified Rabbit Polyclonal Antibody (Pab)
Catalog # AP3104a

Specification

**Bi-Phospho-FGFR(Y653/654) Antibody -
Product Information**

Application	WB, IHC-P,E
Primary Accession	P11362
Other Accession	Q90Z00 , P22182 , Q04589 , P16092 , P21804
Reactivity Predicted	Human, Mouse Chicken, Rat, Xenopus, Zebrafish
Host	Rabbit
Clonality	Polyclonal
Isotype	Rabbit Ig

**Bi-Phospho-FGFR(Y653/654) Antibody -
Additional Information**

Gene ID 2260

Other Names

Fibroblast growth factor receptor 1, FGFR-1,
Basic fibroblast growth factor receptor 1,
BFGFR, bFGF-R-1, Fms-like tyrosine kinase 2,
FLT-2, N-sam, Proto-oncogene c-Fgr, CD331,
FGFR1, BFGFR, CEK, FGFBR, FLG, FLT2,
HBGFR

Target/Specificity

This FGFR Antibody is generated from rabbits immunized with a KLH conjugated synthetic phosphopeptide corresponding to amino acid residues surrounding Y653/654 of human FGFR.

Dilution

WB~~1:1000
IHC-P~~1:50~100

Format

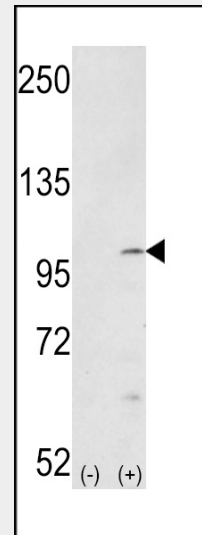
Purified polyclonal antibody supplied in PBS with 0.09% (W/V) sodium azide. This antibody is purified through a protein A column, followed by peptide affinity purification.

Storage

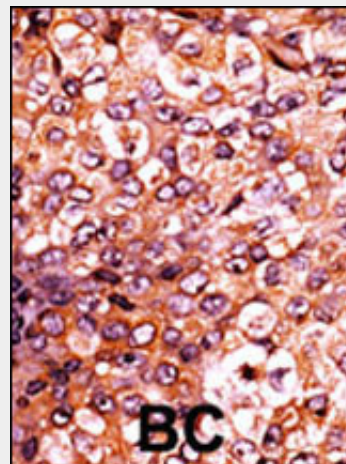
Maintain refrigerated at 2-8°C for up to 2 weeks. For long term storage store at -20°C in small aliquots to prevent freeze-thaw cycles.

Precautions

Bi-Phospho-FGFR(Y653/654) Antibody is for research use only and not for use in



Western blot analysis of FGFR (arrow) using rabbit polyclonal Phospho-FGFR-pY653/4 (Cat. #AP3104a). 293 cell lysates (2 ug/lane) either nontransfected (Lane 1) or transiently transfected with the FGFR gene (Lane 2) (Origene Technologies).



Formalin-fixed and paraffin-embedded human cancer tissue reacted with the primary antibody, which was peroxidase-conjugated to the secondary antibody, followed by AEC staining. This data demonstrates the use of this antibody for immunohistochemistry; clinical relevance has not been evaluated. BC = breast carcinoma; HC = hepatocarcinoma.

Bi-Phospho-FGFR(Y653/654) Antibody -

diagnostic or therapeutic procedures.

Bi-Phospho-FGFR(Y653/654) Antibody - Protein Information

Name FGFR1

Synonyms BFGFR, CEK, FGFBR, FLG, FLT2, HBGFR

Function

Tyrosine-protein kinase that acts as cell-surface receptor for fibroblast growth factors and plays an essential role in the regulation of embryonic development, cell proliferation, differentiation and migration. Required for normal mesoderm patterning and correct axial organization during embryonic development, normal skeletogenesis and normal development of the gonadotropin-releasing hormone (GnRH) neuronal system. Phosphorylates PLCG1, FRS2, GAB1 and SHB. Ligand binding leads to the activation of several signaling cascades. Activation of PLCG1 leads to the production of the cellular signaling molecules diacylglycerol and inositol 1,4,5-trisphosphate. Phosphorylation of FRS2 triggers recruitment of GRB2, GAB1, PIK3R1 and SOS1, and mediates activation of RAS, MAPK1/ERK2, MAPK3/ERK1 and the MAP kinase signaling pathway, as well as of the AKT1 signaling pathway. Promotes phosphorylation of SHC1, STAT1 and PTPN11/SHP2. In the nucleus, enhances RPS6KA1 and CREB1 activity and contributes to the regulation of transcription. FGFR1 signaling is down-regulated by IL17RD/SEF, and by FGFR1 ubiquitination, internalization and degradation.

Cellular Location

Cell membrane; Single-pass type I membrane protein. Nucleus. Cytoplasm, cytosol. Cytoplasmic vesicle. Note=After ligand binding, both receptor and ligand are rapidly internalized. Can translocate to the nucleus after internalization, or by translocation from the endoplasmic reticulum or Golgi apparatus to the cytosol, and from there to the nucleus

Tissue Location

Detected in astrocytoma, neuroblastoma and adrenal cortex cell lines. Some isoforms are detected in foreskin fibroblast cell lines, however isoform 17, isoform 18 and isoform 19 are not detected in these cells.

Bi-Phospho-FGFR(Y653/654) Antibody - Protocols

Provided below are standard protocols that you may find useful for product applications.

- [Western Blot](#)
- [Blocking Peptides](#)
- [Dot Blot](#)
- [Immunohistochemistry](#)

Background

The protein encoded by this gene is a member of the fibroblast growth factor receptor family, where amino acid sequence is highly conserved between members and throughout evolution. FGFR family members differ from one another in their ligand affinities and tissue distribution. A full-length representative protein consists of an extracellular region, composed of three immunoglobulin-like domains, a single hydrophobic membrane-spanning segment and a cytoplasmic tyrosine kinase domain. The extracellular portion of the protein interacts with fibroblast growth factors, setting in motion a cascade of downstream signals, ultimately influencing mitogenesis and differentiation. This particular family member binds both acidic and basic fibroblast growth factors and is involved in limb induction. Mutations in this gene can lead to Pfeiffer syndrome and Jackson-Weiss syndrome. The genomic organization of this gene is very similar to family members 2-4, encompassing 19 exons that are subject to complex alternative splicing, which allows for structural, tissue expression and ligand affinity variations among the isoforms.

Bi-Phospho-FGFR(Y653/654) Antibody - References

Hu, Y., et al., J. Biol. Chem. 279(28):29325-29335 (2004). Ibrahimi, O.A., et al., Biochemistry 43(16):4724-4730 (2004). Sato, N., et al., J. Clin. Endocrinol. Metab. 89(3):1079-1088 (2004). Lundin, L., et al., Exp. Cell Res. 287(1):190-198 (2003). Jiao, J., et al., Arch. Biochem. Biophys. 410(2):187-200 (2003).

- [Immunofluorescence](#)
- [Immunoprecipitation](#)
- [Flow Cytometry](#)
- [Cell Culture](#)

Bi-Phospho-FGFR(Y653/654) Antibody - Citations

- [Brachyury drives formation of a distinct vascular branchpoint critical for fetal-placental arterial union in the mouse gastrula.](#)
- [Short SULF1/SULF2 splice variants predominate in mammary tumours with a potential to facilitate receptor tyrosine kinase-mediated cell signalling.](#)
- [SULF1/SULF2 splice variants differentially regulate pancreatic tumour growth progression.](#)
- [Basic fibroblast growth factor in the bone microenvironment enhances cell motility and invasion of Ewing's sarcoma family of tumours by activating the FGFR1-PI3K-Rac1 pathway.](#)