

F(ab')₂ Anti-Horse IgG (H&L) (Phycoerythrin Conjugated) Secondary Antibody
Rabbit Polyclonal, R-Phycoerythrin (RPE)
Catalog # ASR2985**Specification****F(ab')₂ Anti-Horse IgG (H&L) (Phycoerythrin Conjugated) Secondary Antibody - Product Information**

Description	F(ab')₂ Anti-HORSE IgG [H&L] (RABBIT) Antibody Phycoerythrin conjugated
Host	Rabbit
Conjugate	R-Phycoerythrin (RPE)
Target Species	Horse
Clonality	Polyclonal
Application	,3,4,
Application Note	IF Microscopy 1:100-1:250;FlowCytometry 1:100-1:250;FlowCytometry 1:100-1:250
Physical State	Lyophilized
Host Isotype	IgG F(ab')₂
Target Isotype	IgG (H&L)
Buffer	0.02 M Potassium Phosphate, 0.15 M Sodium Chloride, pH 7.2
Immunogen	Horse IgG whole molecule
Reconstitution Volume	1.0 mL
Reconstitution Buffer	Restore with deionized water (or equivalent)

F(ab')₂ Anti-Horse IgG (H&L) (Phycoerythrin Conjugated) Secondary Antibody - Additional Information**Shipping Condition**

Ambient

Purity

This product was prepared from monospecific antiserum by immunoaffinity chromatography using Horse IgG coupled to agarose beads followed by solid phase adsorption(s) to remove any unwanted reactivities, pepsin digestion and chromatographic separation. Assay by immunoelectrophoresis resulted in a single precipitin arc against anti-Rabbit Serum, Horse IgG and Horse Serum. No reaction was observed against anti-Pepsin or anti-Rabbit IgG F(c).

Storage Condition

Store vial at 4° C prior to opening. Dilute only prior to immediate use. Do not freeze after reconstitution. Store reagent in the dark. This product is stable at 4° C as an undiluted liquid. Use subdued lighting during handling and incubation of cells prior to analysis.

Precautions Note

This product is for research use only and is not intended for therapeutic or diagnostic applications.

F(ab')₂ Anti-Horse IgG (H&L) (Phycoerythrin Conjugated) Secondary Antibody - Protein

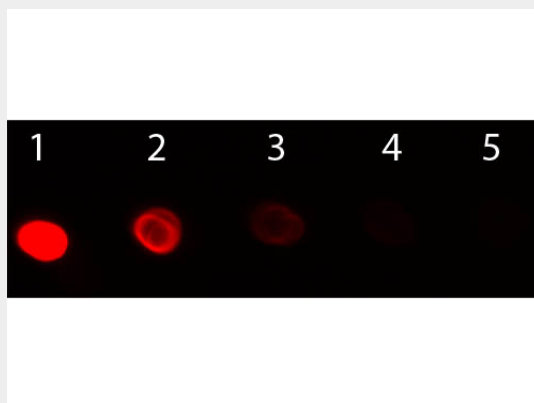
Information

F(ab')₂ Anti-Horse IgG (H&L) (Phycoerythrin Conjugated) Secondary Antibody - Protocols

Provided below are standard protocols that you may find useful for product applications.

- [Western Blot](#)
- [Blocking Peptides](#)
- [Dot Blot](#)
- [Immunohistochemistry](#)
- [Immunofluorescence](#)
- [Immunoprecipitation](#)
- [Flow Cytometry](#)
- [Cell Culture](#)

F(ab')₂ Anti-Horse IgG (H&L) (Phycoerythrin Conjugated) Secondary Antibody - Images



Dot Blot of F(ab)₂ Rabbit anti-Horse IgG Antibody Phycoerythrin Conjugated. Antigen: Horse IgG. Load: Lane 1 - 100 ng Lane 2 - 33.3 ng Lane 3 - 11.1 ng Lane 4 - 3.70 ng Lane 5 - 1.23 ng. Primary antibody: n/a. Secondary antibody: F(ab)₂ Rabbit anti-Horse IgG Antibody Phycoerythrin Conjugated at 1:1,000 for 60 min at RT. Block: MB-070 for 1 HR at RT.