

GnRH-Receptor / LH-RH Receptor Antibody - With BSA and Azide
Mouse Monoclonal Antibody [Clone GNRHR/768]
Catalog # AH11343**Specification**

GnRH-Receptor / LH-RH Receptor Antibody - With BSA and Azide - Product Information

Application	,2,3,4,
Primary Accession	P30968
Other Accession	2798 (GNRHR) and 3973 (LHCGR), 407587 (GNRHR) 468490 (LHCGR)
Reactivity	Human
Host	Mouse
Clonality	Monoclonal
Isotype	Mouse / IgG1, kappa
Calculated MW	54-60kDa KDa

GnRH-Receptor / LH-RH Receptor Antibody - With BSA and Azide - Additional Information**Gene ID** 2798**Other Names**

Gonadotropin-releasing hormone receptor, GnRH receptor, GnRH-R, GNRHR, GRHR

Storage

Store at 2 to 8°C. Antibody is stable for 24 months.

Precautions

GnRH-Receptor / LH-RH Receptor Antibody - With BSA and Azide is for research use only and not for use in diagnostic or therapeutic procedures.

GnRH-Receptor / LH-RH Receptor Antibody - With BSA and Azide - Protein Information**Name** GNRHR**Synonyms** GRHR**Function**

Receptor for gonadotropin releasing hormone (GnRH) that mediates the action of GnRH to stimulate the secretion of the gonadotropic hormones luteinizing hormone (LH) and follicle-stimulating hormone (FSH). This receptor mediates its action by association with G-proteins that activate a phosphatidylinositol-calcium second messenger system. Isoform 2 may act as an inhibitor of GnRH-R signaling.

Cellular Location

Cell membrane; Multi-pass membrane protein.

Tissue Location

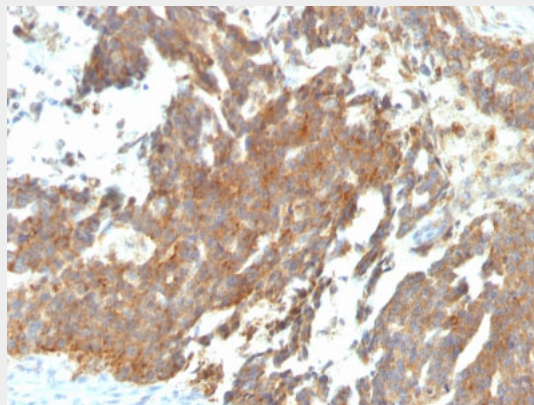
Pituitary, ovary, testis, breast and prostate but not in liver and spleen

GnRH-Receptor / LH-RH Receptor Antibody - With BSA and Azide - Protocols

Provided below are standard protocols that you may find useful for product applications.

- [Western Blot](#)
- [Blocking Peptides](#)
- [Dot Blot](#)
- [Immunohistochemistry](#)
- [Immunofluorescence](#)
- [Immunoprecipitation](#)
- [Flow Cytometry](#)
- [Cell Culture](#)

GnRH-Receptor / LH-RH Receptor Antibody - With BSA and Azide - Images



Formalin-fixed, paraffin-embedded human Ovarian Carcinoma stained with GnRH-Receptor Monoclonal Antibody (GNRHR/768)

GnRH-Receptor / LH-RH Receptor Antibody - With BSA and Azide - Background

Recognizes an epitope on the extracellular domain of gonadotropin releasing hormone (GnRH) receptor or luteinizing hormone receptor (LHCGR). Lutropin (also designated luteinizing hormone) plays a role in spermatogenesis and ovulation by stimulating the testes and ovaries to produce steroids. Gonadotropin (also designated choriogonadotropin) production in the placenta maintains estrogen and progesterone levels during the first trimester of pregnancy. Ovaries and testes abundantly express luteinizing hormone/choriogonadotropin receptor. GnRH receptor contains seven hydrophobic transmembrane domains connected by hydrophilic extracellular and intracellular loops characteristic of G-protein coupled receptors. GnRH stimulates the gonadotrophs of the anterior pituitary to secrete luteinizing hormone (LH) as well as follicle-stimulating hormone (FSH). GnRH influences the protective effect of pregnancy and Gonadotropin against breast cancer. The expression of GnRH on breast carcinoma correlates in part to the degree of tumor differentiation. GnRH-positive breast tumors occur more frequently in tumors with greater cell differentiation in premenopausal women. GnRH is present in luteal and granulosa cells as well as in ovarian cell membrane preparations.

GnRH-Receptor / LH-RH Receptor Antibody - With BSA and Azide - References

Pidoux, G., et al. 2007. Biochemical characterization and modulation of LH/CG-receptor during human trophoblast differentiation. J. Cell. Physiol. 212: 26-35